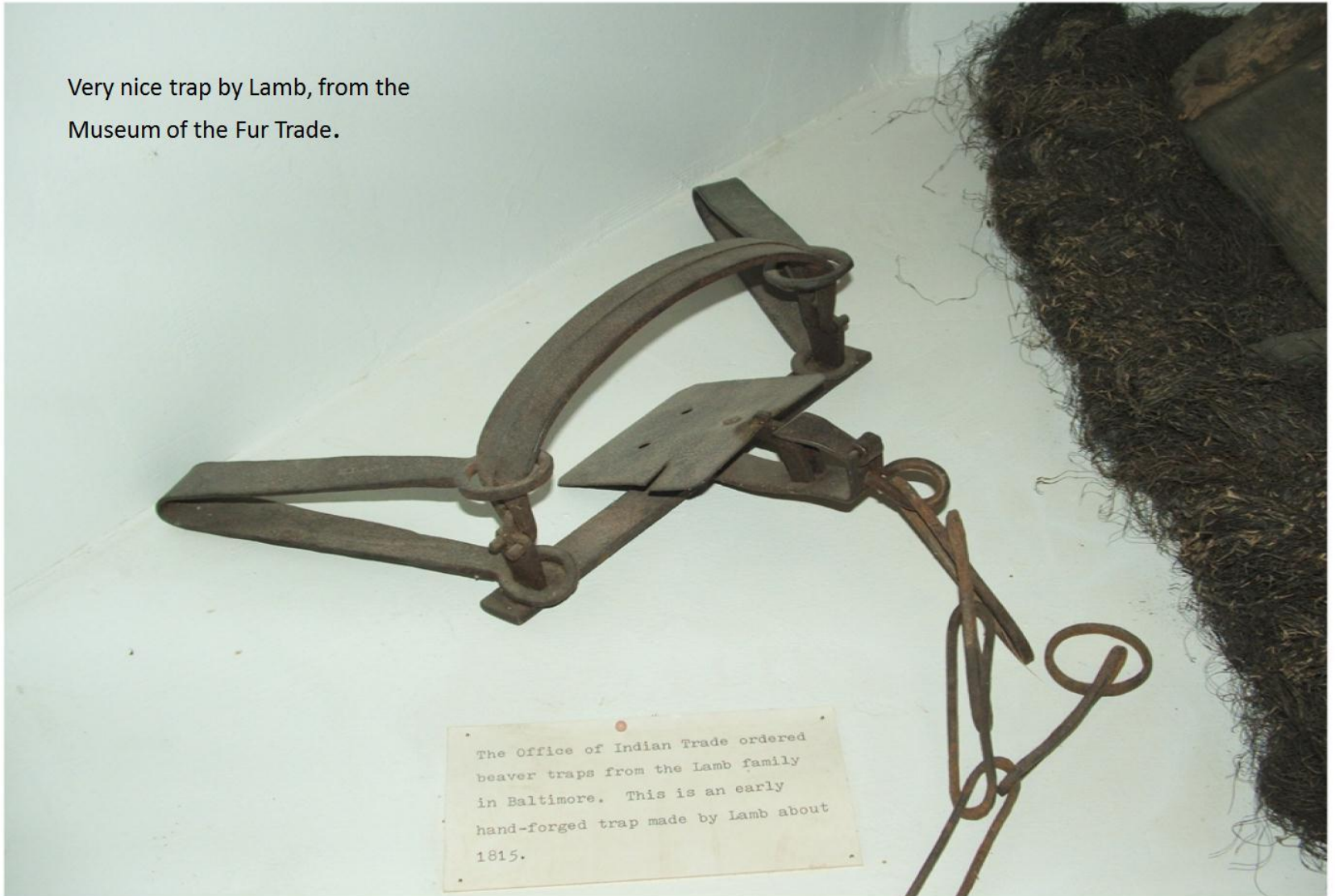


Modifying the Victor steel trap: Chain Swivel replacement

Our goal here is to make a modern trap look like this trap below, this chain attachment is one of the more common types. It's actually simple to do and only takes a few minutes.

Very nice trap by Lamb, from the Museum of the Fur Trade.



To continue this and go another step further, I pulled two more Victors off the wall , a #3 and a smaller #2.



Now we spread open the "J" hook, then cut off the square piece. Save the hook , ditch the chain and square piece. The trap already looks better.



It's much easier if you have a vise, if not this is going to get clumsy. Mark the location to drill a hole under the dog slot, be careful to get this centered up so it doesn't interfere with the movement of the dog. Don't get too low or the swivel will hang in the bend of the bar.



It's best to start with a pilot hole, I started with an 1/8" bit first. Size the bit just a little bigger than the size of the J-hook , this hook was 7/32" , so I used a 15/64" bit, just under 1/4". You could probably get away with 1/4" , but check it first , you just want enough movement to swivel.



After it's drilled and the hook is slipped in , set the trap just to make sure nothing gets in the way of the dog and trigger. If it's centered up right, even on this #2 there is good room for the J-hook.



Now your ready to attach the chain. Channel locks work good here, these hooks are made of a good steel and will take some effort to squeeze. Try not to pinch the chain, just close the hook all the way.



On the #3 Victor, I did everything the same, and it was easier. I couldn't salvage the original J-hook so I used a replacement hook, you can buy these from about any trapping supply outfit. There is just a little more room to drill this hole on the larger Victors , and some of the Triumph and Blake and Lamb traps can be done the same way.



Here are some of the modern J-hooks and modern swivels that can be bought through trap suppliers. These hooks are made of a good steel. These are not often bought to replace broken ones, they are most commonly used to add a swivel section into a chain. Rarely would one of these bend or break.

